

Kilburn Community News

JANUARY | FEBRUARY | MARCH 2025

Kilburn Parish Council and Community Volunteers Win Prestigious Environmental Award!

We are thrilled to announce that Kilburn Parish Council and the Kilburn Community Volunteer Group have won the *DALC Environmental Project of the Year 2024* award. This recognition celebrates their outstanding work on the Kilburn Nature Reserve and Memorial Area—a true testament to the dedication, vision and community spirit of all involved. *More on page 3.*



Inside this issue.....

- [Update on The Little Eaton Greenway](#)
- [Details on the upcoming race night and other 2025 events!](#)
- [Good news and events from around our village](#)



Stay up to date - Join us on Facebook to hear more about what is happening around the village

Search - Kilburn Community Association
www.facebook.com/KilburnVillageHall



Produced by the Kilburn Parish Council - Delivered by wonderful volunteers



Kilburn Parish Council

Report from Kilburn Parish Council – January 2025

At our meeting in November 2024 Mr A Dakin was co-opted as a Member of the Parish Council. We welcome Cllr Dakin and hope he enjoys being a Member of the Council.

In January 2025 Mrs Danielle Adams will be co-opted as a Member. Again, we hope Mrs Adams enjoys becoming a Member of the Council. This means we will have a full compliment of Members and there are no vacancies.

The 'no waiting' area on Highfield Rd came into force on 11th November but as yet no signage has been put in place by Derbyshire County Council. We hope that this signage is imminent.

The Parish Council received an award from Derbyshire Association of Local Councils for the work undertaken by the Parish Council and volunteers on the nature reserve at Rawson Green. The award was collected by the Chair and the Clerk at the AGM of DALC.

The Remembrance Day service and parade was held on 10th November. Approximately 200 residents attended the service at the War Memorial and many followed onto to the service at the Baptist Church. Our sincere thanks go out to all the volunteers who assisted in marshalling the parade.

We continue to receive complaints about dog mess not being cleared up by irresponsible owners. It is especially prevalent on Highfield Rd which is where children walk on their way to and from school. The problem appears to have got worse with the dark nights. We have asked the dog warden to attend and if anybody with a dog is caught not having dog waste bags with them or not clearing up after their dog substantial fines may be given. We would also request residents to check their cameras on 'Ring' doorbells' for culprits and forward the information to the Parish Council where culprits will be reported to the Borough Council.

At the December meeting it was resolved to make a donation of £50 to St Clements Church and £100 to Kilburn Baptist Church in recognition of their help and assistance with the Remembrance Day Service and Carol Service.

The play area on Fairview Close has been decommissioned by Amber Valley Borough Council. The Parish Council is pursuing the Borough Council to continue to maintain the site until such time as the legalities are finalised by the Borough Solicitor.

The Parish Council wish all residents of Kilburn a Happy New Year for 2025

The next meeting will be held on Monday 13th January 2025 at 7pm in the village hall. Residents are welcome to attend.

Sheila Matthews - Kilburn Parish Council Clerk

clerk@kilburnparishcouncil.gov.uk | kilburnparishcouncil.org.uk



Kilburn Parish Council and Community Volunteers Win Environmental Award!

Continued from front page. Kilburn Parish Council with the passionate members, has worked tirelessly over the past few years to transform the nature reserve. Situated in a relatively built-up area with limited green spaces the reserve had previously fallen into disrepair, becoming overgrown. However, thanks to a grant from the Derbyshire Environmental Trust, along with financial support from the Parish Council, other generous donations significant progress has been made.

The transformation began with a thorough tree survey, leading to the careful felling of selected trees and opening up the area to allow the remaining trees to flourish. Footpaths were laid to make the reserve accessible for all residents, including those with disabilities and parents with prams. Recognising the challenge of maintaining the space the council sent out a call for volunteers and Kilburn Community Group was formed, which has since grown into an integral part of this ongoing project. Volunteers guided by horticultural experts within the group, meet regularly to maintain the reserve. Their collective efforts have turned it into a haven for wildlife and a cherished spot for residents to enjoy.

One of the reserve's most poignant features is its Memorial Area, where trees and shrubs have been planted in memory of loved ones. With benches and seating available, it offers a tranquil space for reflection and remembrance.

Friendships have flourished through this initiative, with volunteers working together on evenings and weekends, contributing as much or as little time as they can. Their dedication has created a space that not only benefits the environment but also strengthens the bonds of our community.

Congratulations to Kilburn Parish Council and the Kilburn Community Group on this well-deserved award! Your efforts have made a lasting impact and we look forward to seeing how the reserve continues to thrive in the years ahead. If you'd like to get involved, new volunteers are always welcome!

County Councillor for Horsley Division - Cllr Trevor Ainsworth

Keeping you updated

Hi

The nights have really drawn in now. The good news is the daylight hours are lengthening, and we can look forward to longer daylight hours.

Check labels on toiletries.

DCC trading standards team is asking you to check labels on toiletries and cosmetics in your home and dispose of any containing the banned ingredient Lialil.

Butylphenyl methylpropional, otherwise known as 'Lialil', was used as a floral fragrance in things like perfumes, shower gels and deodorants. But because its use has been associated with harm to the reproductive system, it's been illegal to sell products containing it since December 2022.

So, check your cupboards and if you find some do not use it. If you've bought these since 2022, report them to the Citizens Advice consumer helpline: 0808 223 1133.

Snow updates from Derbyshire County Council

Winter is upon us, to keep your journeys safe you can now sign up to snow and road updates from us.

Did you know that you can sign up to receive emails from us whenever snow or ice blocks main roads?

You'll also get emails when we have to close roads and then again as they are re-opened. Just visit our website and enter your email address.

And when bad weather hits, why not follow us on Facebook to find out the latest information.

Calling Derbyshire pensioners! Check now if you qualify for Pension Credit and you could still be in time to get this year's winter fuel payment.

It's estimated that up to 10,000 pensioners in the county are not claiming the benefit boost that unlocks other support, including up to £300 for heating. The last date for claiming Pension Credit in time to potentially qualify for the winter fuel allowance is Saturday 21st December. This is because Pension Credit can be backdated for three months.

You could qualify for Pension Credit even if you:

- Have significant savings (in the tens of thousands of pounds).
- Are a couple with up to £460 a week coming in, but both qualify for disability benefits and are carers for each other.
- Own your own home.

There are several ways Derbyshire residents can find out if they, or someone they know, qualifies for Pension Credit:

- Apply online on the gov.uk website – at apply-for-pension-credit.dwp.gov.uk/start.
- Call the Government’s Pension Service on 0800 99 1234.
- Use the county council’s Better Off benefit calculator which provides an overview of benefit entitlement derbyshire.betteroff.org.uk/#/home.
- Visit the council’s Pension Credit webpage for more information - derbyshire.gov.uk/pensioncredit.
- Contact the council’s benefits adviceline on 01629 531535.

Warm spaces grants

Are you involved with a local charity, group or venue that could set up a new warm hub?

Community groups across Derbyshire are being invited to apply for funding to set up ‘warm and welcoming spaces’ or contribute towards the costs of existing spaces, to help local residents this winter.

Grants of between £1,000 and £3,000 are available to support local charities, community groups or community venues.

Warm and Welcoming Spaces aim to provide support for local people through the winter months – offering a place to meet new people, enjoy a hot drink, get information on local services and take part in activities.

Visit; www.derbyshire.gov.uk/warmspaces

All that remains is to wish you a Healthy and Prosperous New Year

Trevor Ainsworth

Mobile: 07970 741787 | Email: Trevor.Ainsworth@derbyshire.gov.uk
Derbyshire County Council, County Hall, Matlock, Derbyshire, DE4 3AG



AMBER VALLEY WESTMINSTER

LINSEY
FARNSWORTH
♦
MP for Amber
Valley



Proud to serve Amber Valley!

I am proud to call Amber Valley my home and being elected MP for Amber Valley is one of the biggest privileges of my life.

Since being elected, my team and I have hit the ground running, setting up two offices, meeting constituents, speaking in Parliament and answering thousands of emails.

I have met with local businesses, community groups, schools, dentists, parish, borough and county councils. I have been listening to the changes they want to see in Amber Valley and have started the work of pushing for these changes in Westminster.

I've also attended some wonderful community events, such as the Heanor Happening and Ripley Fair and have welcomed the East Midlands Mayor to see the great work being done to revitalise the town and bring in new businesses.

This is just the beginning and I look forward to continuing to work with you to make Amber Valley an even better place to live and work.

I have been holding regular surgeries, throughout Amber Valley and many more are planned for next year.

01773 301983 | linsey.farnsworth.mp@parliament.uk

The Constituency Office in Numbers

Casework emails
received: 3,013

Casework Successfully
Closed: 1,004

Average Number of
Daily Emails: 175

In-Person Advice
Surgeries: 7,
throughout
Amber Valley

Cups of Tea Made:
1,340,072*

*ESTIMATE

Wonderful Community Events

November and December hold some of our most cherished community events, The Remembrance Sunday Parade and the Christmas Carol service. Here are some photos that we would like to share.



Little Eaton Greenway

What is the project?

The project will convert the old Little Eaton branch railway line into a multi-use greenway, from Little Eaton to Rawson Green.

It will be a 5.6km long surfaced greenway from Duffield Road in Little Eaton to Rawson Green. The width of the path base will be 3.5m, and the width of the surfaced route will be 3m.

It will be a non-motorised route, free from road vehicles, designed as a natural green corridor to connect with existing cycleways, footpaths and bridleways. Permitted users will be restricted to pedestrians, all wheeled visitors including pedal cyclists, people with push chairs, mobility scooter users and horse riders.

The project will improve biodiversity, reduce carbon emissions, enhance the natural environment and enable parents and children to access Little Eaton primary school by foot, cycle or scooter. It will provide a low carbon transport choice throughout the valley, linking communities and places of employment.

How is it being funded?

The project is 100% funded by UK Government, through Active Travel England and will not divert funds from other Derbyshire County Council work.

Will the route join up with others?

Yes - The route will form part of the Key Cycle Network. It will join the existing cycle route to Derby to the south (National Cycle Route 54) and developing routes north through Marehay to join the Ripley Greenway.

The route also joins seven existing footpaths and one bridleway.



View north looking towards Jack O'Darley's Bridge, Little Eaton

Will the route integrate with onward routes at Rawson Green?

The project allows for a connection to the pavement at Rawson Green. The pavement will be widened to allow shared use for walkers, wheels and cyclists, to the junction with Derby Road. Investigations are underway to continue the route along the remainder of the railway line north of Rawson Green. This may form an additional project in the future.

What will be the surface?

The existing railway ballast will be crushed and compacted and then a new surface will be laid on top – no ground raising will take place. The surface will be a flexible permeable porous material, made up of recycled tyres, grit and polyurethane. It will be a smooth surface and the colour will be grey-brown, similar to other greenways in Derbyshire.

How long will it take to build/ how disruptive will the works be?

A contractor has been engaged and work is now commencing. The pre-construction work will consist of clearing the existing shrubs and vegetation and installing a few access gates to prevent illegitimate motor vehicle use. The main contract will prepare the ground and deliver a new surface, carry out maintenance to the Bottle Brook bridge structures, as well as implementing habitat improvements along the route. The work will be done in phases, so there won't be noise or disruption across the whole route for the duration of the construction. Construction vehicles will enter the site from the south and from other access points where the route crosses the roads.

Works can only be undertaken between 7am and 6pm Monday to Friday and 8am to 1pm on Saturdays. It is anticipated that the work will take up to 12 months from December 2024 to December 2025.



Clowne Greenway—Completed 2021

How will wildlife be protected? What about the impact on trees and vegetation?

Various surveys have been conducted including a habitat survey, individual protected species surveys including bat, newt and badger as well as a full river condition report. The project will create a net gain in terms of biodiversity. This is a planning requirement of all major development.

There has been a full arboriculture impact assessment and tree survey. Some Ash trees may be removed where found to be carrying the Chalara Ash die back disease. There is a national obligation to reduce diseased stock to protect life and property.

The clearance work will mean that some existing trees and shrubs will be cleared from the site to form a five metre wide corridor. The central 3m will be surfaced and the remaining 1m each side will be maintained as a grass verge encouraging wildflowers and subsequent invertebrate diversity.

Most of the trees and shrubs along the route have grown relatively recently since the railway track closed and ceased to be maintained. In some areas boundaries will be improved with newly planted hedgerow, and other areas may be gapped up. The end goal is that a tree lined corridor remains which supports a viable and healthy range of native plants and animals.

The project will also remove the non-native and invasive species such as Snow Berry and Himalayan Balsam. Removing these will enable native woodland flora to re-colonise these areas of the track.

All significant tree work including clearance and pruning will take place outside the bird nesting season (March to August inclusive). Any works to trees during this time will only be undertaken after approval from a qualified ecologist.

Clippings and other useable material from tree work will be re-used on site – for construction of dead hedges and habitat piles. Although some trees will be removed, many other areas will be newly planted. No burning shall take place on site.

Will there be an increased risk of flooding?

Flooding is not new - Bottle Brook and Little Eaton experienced serious floods in the 19th Century, and again in the 1930s and 1950s. Flood defence work in the 1980s and 1990s reduced the risk of floods but there has been occasional flooding along the route of the railway line in more recent years, brought about by wetter winters and more intense rainfall. The flood plain at Mill Green and the embankments either side of the proposed greenway provide protection to neighbouring houses during times of flood.

A flood risk assessment concluded that the proposed greenway will not increase the existing flood risk and will not alter the existing drainage on the site.

The proposed greenway will not increase the amount of impermeable surface so there will be no increase in surface water run-off. The surface of the route will be porous.

What will the gradient be?

The former railway line is predominantly flat and had level crossings at the roads. The Greenway follows this line.

Can people access the route during construction?

The route will be closed when the surface material is being laid, which needs time to cure. At other times, the route may remain open in part as it is now, but sections may need to be closed during the works to keep the public safe. If a section needs closing that affects a right of way a temporary closure notice will be put in place.

Dog control – will dogs have to be on leads?

It will not be mandatory for dogs to be on leads on this route, but they should be under control of the owner/carer.

Will there be interpretation / information boards and a map to show connections with other paths?

Yes, it is anticipated that interpretation panels, including a map will be installed on site.

What is the history of the line? How will the heritage be protected and will there be reminders of the railway?

The railway was built in 1855 as a branch of the Midland Railway, going north through Little Eaton and Coxbench to Ripley. The last train to run on the line was in April 1999 and the track was taken up in 2011.

A heritage impact assessment was undertaken in 2023 and concluded that creating public access to the route would be of benefit, preserving and enhancing the conservation areas, and recommended that up to 76 historic features are retained and conserved as part of the project.

Most of the historical features of the railway line were removed when the track closed and the line was taken up. However, the bridges over the brook will be conserved and there will be interpretation boards along the route to inform people about the history of the site and the former railway stations at Little Eaton, Coxbench and Kilburn.

The Little Eaton Local History Society will support the creation of additional boards and preserve the stories of the railway on its website.

Is there local support for the project?

The project has been discussed at multiple community meetings and events including a stall at Little Eaton Carnival in 2018 and 2019, a community survey in 2019 and a Derbyshire County Council survey in 2022. 97% of respondents to the DCC survey strongly support or support the project. 46% said they would use the route several times a week.

KILBURN COMMUNITY
ASSOCIATION



FAMILY

*** RACE NIGHT! ***

AT KILBURN VILLAGE HALL



FRIDAY 7TH MARCH

*** DOORS OPEN 6.45PM - FIRST RACE 7.15PM ***

RACE STEWARD DAVE ASHLEY

For more information please see the Kilburn Community Association Facebook page
or scan the QR code

Kilburn Events for 2025

Monday 13th January | Parish Council Meeting | 7pm | Village Hall

Monday 10th February | Parish Council Meeting | 7pm | Village Hall

Monday 10th March | Parish Council Meeting | 7pm | Village Hall

Saturday 12th April | Spring litter pick | 10am | Church Street Car Park *

Monday 14th April | Annual Parish Council Meeting | 7pm | Village Hall

Monday 12th May | Parish Council Meeting | 7pm | Village Hall

Monday 9th June | Parish Council Meeting | 7pm | Village Hall

Saturday 7th June | Kilburn Community Day | Village Hall & Church St Park*

Monday 14th July | Parish Council Meeting | 7pm | Village Hall

Monday 1st September | Parish Council Meeting | 7pm | Village Hall

Monday 13th October | Parish Council Meeting | 7pm | Village Hall

Monday 10th November | Parish Council Meeting | 7pm | Village Hall

Saturday 1st November | Autumn Litter Pick | 10am | Church Street Car Park *

Sunday 9th November | Remembrance Parade | 2pm *

Monday 8th December | Parish Council Meeting | 7pm | Village Hall

Friday 12th December | Christmas Carol Service | 6.30pm | Baptist Church*

**More information in future Newsletters*

Useful Contact Details

- Police, Non Emergency Number - 101
- NHS Medical Helpline - 111
- Arthur Medical Centre - 01332 880249
- Amber Pharmacy - 01332 985950
- Report Dog Fouling - 01773 841335
- Report Potholes or other damage to roads - Derbyshire County Council website or call 01629 533190
- Report Smelling Gas - 0800 111 999
- Report a power cut - 105
- Kilburn Parish Council - clerk@kilburnparishcouncil.gov.uk
- Amber Valley Borough Council - Call 01773 570222
AVBC - Out of hours (emergency only): 01773 841414

KILBURN COMMUNITY GROUP

We are a group of volunteers working to improve our area, currently working on Kilburn Nature Reserve/ Memorial Area.



**Bare branches whisper 'neath frosty skies,
Wild seeds wait where the cold wind sighs.
Hedgerows stand, a haven strong,
Nature's promise, a quiet song.**

Celebrating Our Volunteers and Looking Forward

A Heartfelt Thank You

We would like to extend our deepest gratitude to every volunteer who has contributed their time, energy, and dedication to our local nature reserve and memorial area. Your hard work has truly transformed this special place into a haven of beauty and tranquillity for our community. From planting wildflower seeds, spring bulbs, hedgerows, and trees to maintaining the grass areas and pathways, your efforts have brought life and vibrancy to this treasured space. The newly completed nature reserve pathway is now a welcoming feature, providing a peaceful route for all to enjoy.

Exciting Developments

We're thrilled to share that the canopy gathering area is nearly finished. Once complete, it will be a wonderful spot for groups and children to gather, whatever the season. This addition, alongside the work already done, will greatly enhance the experience for visitors. Looking ahead to 2025, the Greenway footpath will connect our village and neighbouring communities, making all the efforts poured into the reserve an even greater asset. We hope this will inspire families, groups, and individuals to explore and embrace the serenity of this special area.

Plans for Next Year

Our work doesn't stop here! We have exciting plans for the coming year and will need your help to bring them to life. Whether it's planting, maintaining the grounds, or lending a hand in other ways, your support is invaluable. If you'd like to get involved, please come forward—we need you!

Thank you once again to everyone who has made this progress possible. Together, we are creating a lasting legacy for our parish and beyond.

See our Facebook page for future meet-up dates.

**If you have any questions please contact Tracey, Simon and Carl:
Clerk@kilburnparishcouncil.gov.uk | 07989623309.
Or, visit the Kilburn Nature Reserve Facebook page and leave a message.**

Thank You to Our Amazing Volunteers!

Kilburn Parish Council would like to extend a big thank you to everyone who participated in our recent winter litter pick. Your efforts ensured that the village was clean and welcoming for the remembrance parade, allowing us to honour our fallen in a dignified and litter-free environment.

A thank you goes to Darren, our parish warden, for his continued dedication. Between the litter pick and the parade, Darren kept on top of any stray litter and made sure the memorial area was tidy for the event.

We're incredibly grateful to all the volunteers, including those who joined us from outside the area. Your willingness to come together for the good of our community is truly inspiring. The camaraderie and community spirit during the event was wonderful to witness. To those who had to leave before the group photo, we sincerely apologize for missing you in the picture—we appreciate your contributions just as much!

Without our volunteers, this effort would not have been possible. We look forward to seeing you, and hopefully even more volunteers of all ages, at our spring litter pick. Together, we'll keep our village looking its best and enjoy the rewarding sense of unity that comes with it. Date Saturday 12th April.

Thank you again for your time, energy, and commitment. We are proud to have such a caring and proactive community.



Kilburn Infant & Nursery School News

Telephone: 01332 880449 | Email: enquiries@kilburn-inf.derbyshire.sch.uk

Website: www.kilburnprimaryschool.co.uk

Happy New Year to everyone from KINS! Here are some photos from our busy and fun end to the Autumn term!

All of our classes continued with their half termly learning visits and memorable experiences with Y2 Owls enjoying a 'Castles Day' after their visit to Bolsover Castle and Reception Mice had lots of fun on their 'Pyjama Day'! Y1 Foxes enjoyed a 'Victorian Xmas Day' following their visit to The Black Country Museum and we also welcomed volunteers from Belper Mill to host a 'Victorian School Day' for the Foxes.



We welcomed lots of families and new parents into school for our 'Open Morning' and held a great SPOTacular fundraising event for Children in Need.

Our Christmas in school started with a Fair including lots of stalls and a magical Grotto for a special visitor in red! We organised an Infant Christmas Show called 'Whoops-a-Daisy Angel' and we were very proud of all of the children's singing, dancing, acting and narrating, with children signing all of the show songs in Makaton. The Nursery also held a Christmas Show with all of our 3-4 year olds dressed in Christmas costumes very bravely singing lots of songs in front of their families!



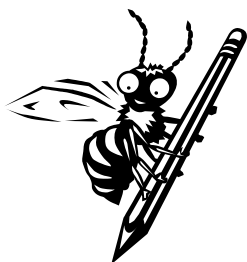
We also had lots of fun on our Christmas Party days, Polar Express theme day, 'Kilburn's Got Talent Show' and a 'Christmas jumper day' in aid of Treetops Hospice.



For weekly photos of learning, events, fundraising, visits, & activities, please see our school 'Facebook' page!

Best wishes from all at KINS!

Joanne Baillie
Head teacher





Kilburn Junior School News

Email info@kilburn-jun.derbyshire.sch.uk
www.kilburnjunior.sch.uk



It's all happening in the Kilburn Junior School Wood



Our Trailblazer outdoor learning programme offers something unique and special to the pupils of Kilburn Junior School, providing practical experiences that help underpin many areas of the school curriculum.

The boys and girls spend half a day each week outside, supported by Mr Goodburn and his team, developing skills

and attributes that will help them in the

future. If you have an interest in the outdoors and would like to support the children as one of our many volunteers, please contact the school office.



Snow Days at School

When it snows some schools close... some schools keep the children inside... not KJS... we embrace the snow!

The children enjoyed, making snowmen, sledging down the field, snowballing and even making an igloo during the recent snowy weather. It was wonderful to see everyone having so much fun and making happy memories with

their friends.



Year 4 Residential to Willersley Castle



Our fantastic fours recently enjoyed a residential at Willersley Castle near Cromford. In the Arkwright family's former home, the children enjoyed taking part in a selection of outdoor, adventurous challenges including the Willersley Zip Wire, Rock climbing, the blind trail, survival skills and even tried their hand at axe throwing.



It was a real pleasure to support such a lovely group of children, and we are so proud of the way they conducted and challenged themselves whilst supporting each other.

The instructors were incredibly complimentary of the children and commented on their resilience, teamwork and manners too, which is always good to hear.



Spreading Kindness and Smiles

Residents of the Kilburn Care Home very kindly sent us some cards to spread positivity, along with some scrumptious chocolates.

We thought we'd return the favour and send some cards back to them to make them smile too



School Governor Vacancy

We are pleased to announce that we have an opportunity for a member of the community to join our governing body.

The governing body has responsibility for governance in school and works closely with school teams to support and challenge the school so that we can continue to be the very best we can.

If you are interested in joining the school Governing Body, please contact the school office for further details.

New Year Wishes from KJS

I hope you enjoyed the Christmas period, and I would like to take the opportunity to wish everyone in the Kilburn Community a happy and peaceful 2025.

Do you want to make a difference
to schools in Derbyshire?

Are you willing
to challenge?

Have you got
skills to share?

Do you want to
get involved with
your local school?



Are you interested
in shaping the
future of young
people?

Become an Embark School Governor!

If you would like any further information about the role, or to express an interest in joining one of the Embark Local Governing Teams which are located across Derbyshire, please contact:
Louise Rowland, Governance Officer, Embark Federation on 01332 477722 or
l.rowland@embarkfed.org.uk



St Clement's Horsley Church Diary January – March 2025

- There is a weekly practice for ringing the church bells every Monday at 7:30pm – drop in if you'd like to have a go.
- There is weekly choir practice in the church every Wednesday at 6:45pm – anyone welcome to join us anytime.



Date	Event
Saturday 4 th January	10:00am till noon COFFEE MORNING – tea/coffee with cake and produce stall in church 
Sunday 12 th January	10:00am Holy Communion Service
Sunday 19 th January	10:00am Contemplative Worship
Wednesday 26 th January	10:00am Morning Prayer Service
Sunday 26 th February	10:00am Morning Prayer Service
Saturday 1 st February	10:00am till noon COFFEE MORNING – tea/coffee with cake and produce stall in church 
Sunday 9 th February	10:00am Holy Communion Service
Sunday 16 th February	10:00am Contemplative Worship
Sunday 23 rd February	10:00am Morning Prayer Service
Saturday 1 st March	10:00am till noon COFFEE MORNING – tea/coffee with cake and produce stall in church 
Wednesday 5 th March	7:00pm Ash Wednesday Holy Communion Service
Sunday 9 th March	10:00am Holy Communion Service
Sunday 16 th March	10:00am Contemplative Worship
Sunday 23 rd March	10:00am Morning Worship Service
Mothering Sunday 30 th March	See Facebook page for details or ring 01332 880284

To enquire about booking a christening/baptism or a wedding, please contact Rev Tracy Robinson: denbygroup.tracy@gmail.com or phone: 01332 880284
Service and event information can be found online at A Church Near You, or on our Facebook page – St Clements Church Horsley.

Arthur Medical Centre

Update



The Partners of Arthur Medical Centre would like to thank all who joined us on Wednesday 20th November 2024 as Mr Martin Allsopp, Chair of the Patient Participation Group, cut the ribbon to officially open our new rooms. We are delighted to see the vision that we had for this ambitious project becoming a reality!

We have been working very hard over recent weeks to finalise this and other projects which will make significant, tangible improvements to patients' ability to access to our services, and their experience when doing so.

The new extension provides:

- 5 new consultation rooms
- A new downstairs multifunctional Reception/Office area
- A new downstairs patient waiting room
- Improved patient access to the lower ground floor level via the rear of the building

Committing to this extension has been a brave step for the practice at a time of a great deal of uncertainty. We have done this because we believe in the importance of general practice and see it as essential in:

- Providing holistic care
- Supporting patients living with long term conditions
- Helping people to live well for longer
- Prioritising prevention & wellbeing
- Being a cost effective backbone of the NHS

We have extended our practice for several practical reasons.

1. Our patient list size has been growing each year, we currently serve 9,107 patients
2. We were already beyond the room capacity of the building as it was, prior to the start of the build and subsequently had difficulties in accommodating people.
3. We will be able to consider hosting other community services – for example, we hope to be able to support phlebotomy services from the practice once again in the near future
4. Improve capacity to accommodate trainee GPs and nurses

We would like to express our sincere gratitude and thanks to those who have supported us through this challenging period of the build.

- Firstly, to the patients who have been supportive and understanding whilst we have needed to use our building differently through the construction phase. Particular thanks to our Patient Participation Group who act as 'critical friends' to the practice and who are a source of feedback and support
- To Derby and Derbyshire Integrated Care Board – particularly their Estates team who have been very supportive, in terms of financial grants and practical help and guidance
- To Bailey Construction who have completed work promptly and provided frankly an excellent service to the practice, and other contractors such as Carter Electrical and Cresco Heating Services
- Finally, we would like to thank our Practice team who have been very flexible and have worked very hard, over and above their normal duties to support this vision towards the reality we are now able to see

We are not finished by any means! But in November we have delivered

- New clinical rooms
- A new telephony system
- A new website
- New appointments system

All of which will make tangible improvements to the patient experience and the care that we provide.

We are delighted to present these new improvements to you and look forward to the future of Arthur Medical Centre!

Arthur Medical Centre, Main Street, Horsley Woodhouse, Derbyshire, DE7 6AX

General Enquiries: 01332 880249

Repeat Prescriptions: 0115 855 0260

Out of Hours: 111

Opening hours: Mon– Fri 08:00 to 18:30

For more information visit the website - www.arthurmedicalcentre.co.uk

KILBURN VILLAGE HALL – Only £15 per hour to hire!

	Mornings	Afternoons	Evenings
Monday		Munday Club - Over 60's Group 2-4pm (fortnightly) Tel: 07547477125	Parish Council Meeting 7pm (2nd Monday of the month) KCA Meeting 7pm (4th Mon) Your Life Yoga 7.30-8.30pm (instead of 3 rd Wednesday) Tel: 07496617733
Tuesday	DanceFit 55+ 10.30 -11.30am Tel: 07585009270	Burnet Academy of Martial Arts 4-5pm Tel: 07779521141	Keep Fit 7-8pm Tel: 07510199112
Wednesday		Slimming World 2.30-6.30pm Tel: 07478 276432	Your Life Yoga 7.30-8.30pm (Class moves to Monday on 3 rd Wednesday of the month) Wine Circle 7-9.30pm (3 rd Weds of the month) Tel: 0115 9303712
Thursday	Derbyshire Toy Library - Stay & Play 9.30-11am (Term Time only) Tel: 07866484550		Patricia Cooke School of Dance 6.30-8.00pm Tel: 01332 660837
Friday	Chatterbox Café 10am -12noon (Fortnightly) Tel: 01332 780486		
Saturday	AVAILABLE FOR PARTY HIRE!		
Sunday	Kilburn Baby and Toddler Group 9.30-11.30 (Fortnightly) Tel: 07877356262	Derby Christian Fellowship 5-6.30pm (2nd Sunday of the month) Tel: 01332 781200	To check availability or to hire the hall contact us on: Facebook - Kilburn Village Hall, Kilburn_village_hall@outlook.com or 07817311694